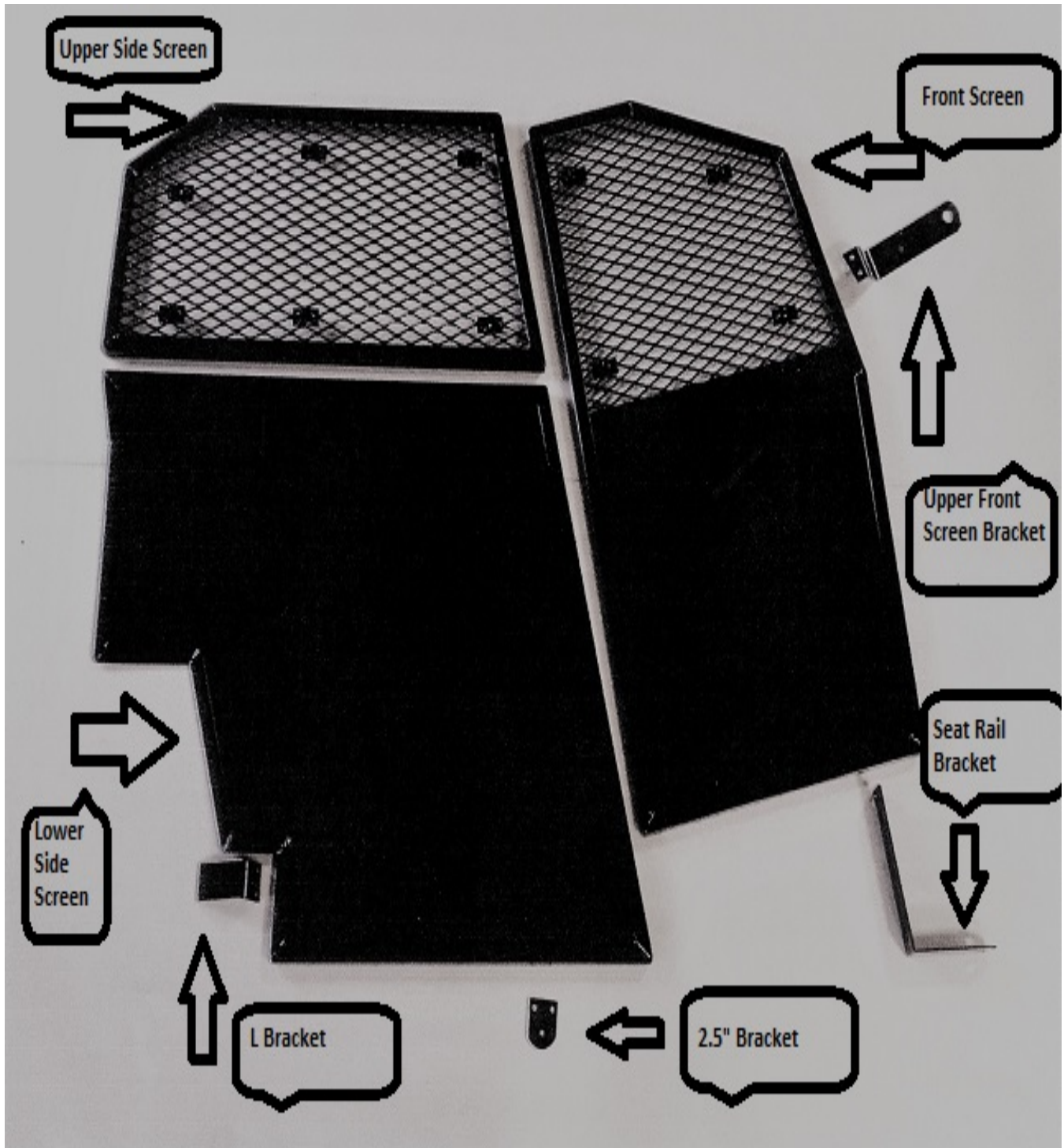


Ford F-Series Install Instructions 2015+



Custom Cage
6102 N 23rd Street
Ozark, Mo 65721
(605) 642-7609
WWW.POLICECAGES.COM

Ford F-Series Install Instructions 2015+

Flip both rear seats up. Move both driver and passenger seats all the way forward.

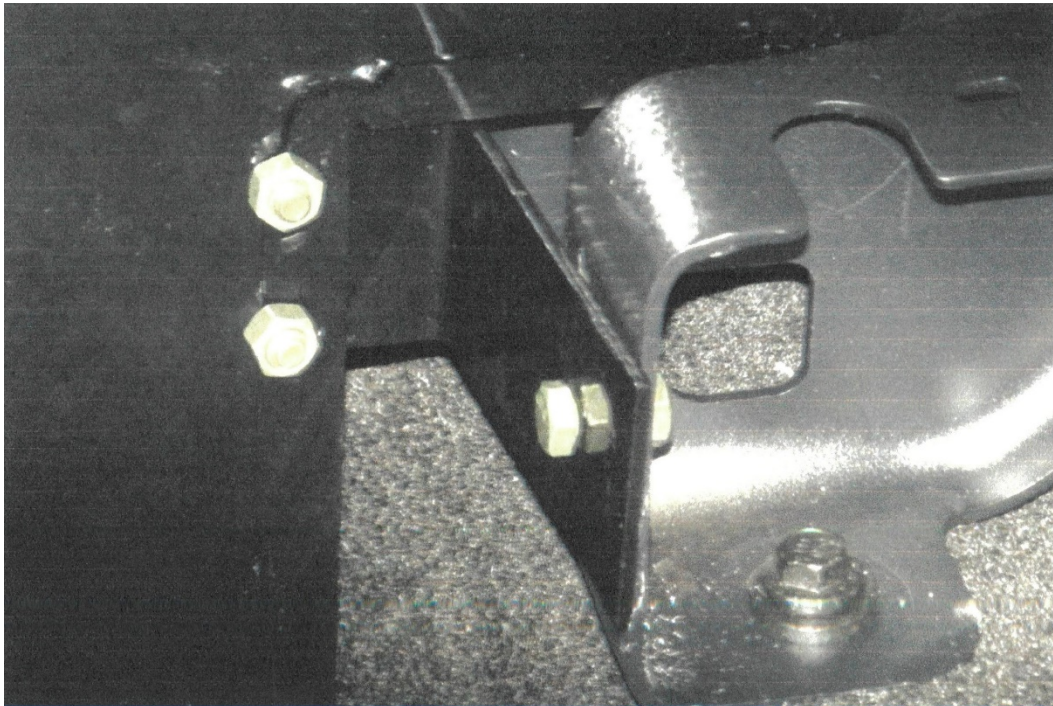
1. Install 2.5" bracket to lower front of side screen.
2. Place lower side in rear of vehicle and slide between seats in the seat split.
3. Attach "L" bracket to seat frame on the 2/3rds side. (See Picture below) and to lower rear of side screen.
4. Attach upper side screen to lower side screen.
5. Remove outside rear seat rail bolt from front passenger seat. Install seat rail bracket under the seat rail and LOOSELY replace seat rail bolt.
6. Attach upper front screen bracket and foam tube to front screen.
7. Remove passenger seat belt bolt and place front screen in vehicle.
8. Attach upper front screen bracket to seat belt bolt.
9. Attach front screen to seat rail bracket.
10. Adjust the position of the partition if needed and fasten all bolts.



CUSTOM CAGE

**Ford F-Series
Install Instructions
2015+**

11. Finish the foam tube. Tap screw the 2.5" bracket to the floor.



CUSTOM CAGE

**Custom Cage
6102 N 23rd Street
Ozark, Mo 65721
(605) 642-7609
WWW.POLICECAGES.COM**